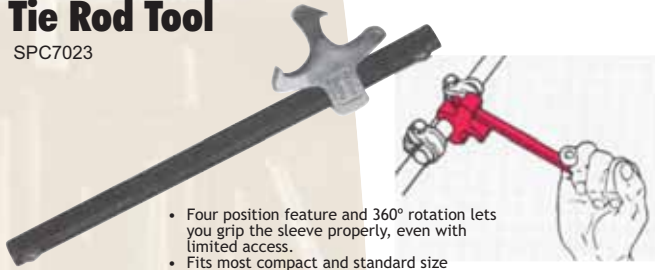




WHEEL SERVICE EQUIPMENT

Tie Rod Tool

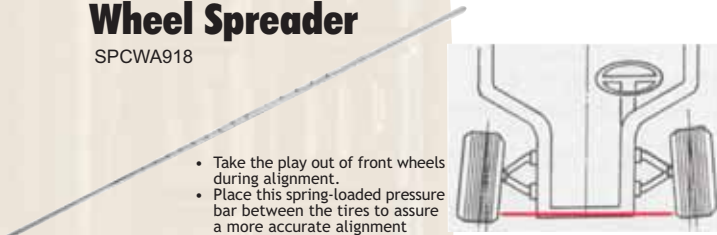
SPC7023



- Four position feature and 360° rotation lets you grip the sleeve properly, even with limited access.
- Fits most compact and standard size passenger cars and light trucks

Wheel Spreader

SPCWA918



- Take the play out of front wheels during alignment.
- Place this spring-loaded pressure bar between the tires to assure a more accurate alignment
- A must for Mercedes vehicles

Weight Bag Set

JBGE021

- Set Contains:
- 12 x 17kg
 - 3 x 7kg
 - 2 x 2kg



BLACKHAWK

10 Tonne Porta Power

BH65135



Bending Equipment



G Clamp
JBGE008

4 Stud Bending Jig
JBGE006

5 Stud Bending Jig
JBGE007

Accessories

Magnetic Adjustable Camber Gauge

SPC8113

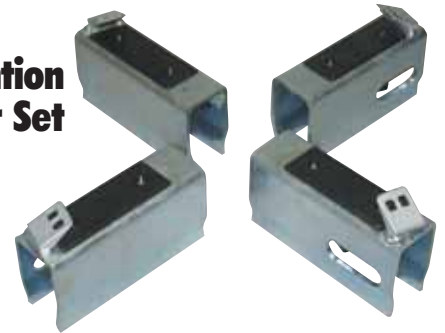


- Time/money saving device
- Return a strut to its original camber after repair or replacement
- Measure camber change movement before re-installing alignment heads during camber kit installation
- Check the amount of camber change before reinstalling tire and wheel assemblies on trucks receiving offset alignment bushings

4" Extention Adaptor Set

ST4027654

- T4500 - 24"
- T3000 - 22"



ROMESS Adaptors



Standard Adaptor

JB-09606-50

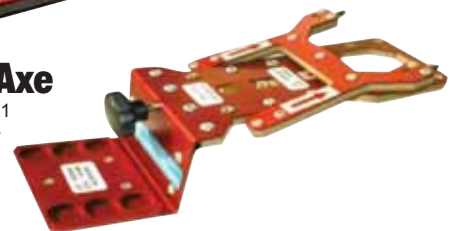
Front Axle

Merc Adaptor
JB-09606-60



Rear Axle

JB-09606-61
Merc Adaptor



YOUR SOLUTIONS PROVIDER

If a Dealer does not call on you contact our National Customer Services Center:
Tel: 0861 SNAPON (762766) | Fax: 0861 762767
National Sales Director: Cell: 082 551 5388 | E-mail: equipment@snapon.co.za

John Bean™ is a brand of **Snap-on Equipment**

Leaflet Part No: SA-JB05