



# Visualiner PRISM

Professional wheel alignment with  
two-camera technology

Accurate  
Flexible  
Easy-to-service





## Two-camera technology at it's best

Snap-on Equipment has years of experience in developing wheel aligners as the pioneer of the three-dimensional imaging wheel alignment technology.

This profound knowledge matched with the advantages of CCD technology has now led to development of the world's first implementation of 100% portable imaging wheel alignment.

The John Bean Visualiner PRISM uses front-wheel targets and rear-wheel pods (**P**ortable **D**evice) to carry out wheel alignment. With this two-camera technology the optical communication on the front axle cannot be interrupted, hence there is no need for a spoiler adaptor.

This wheel aligner allows measurements up to maximum steer without electronic turntables, which saves relative investment and service / repair costs.

An added advantage is that no electronic components are provided on the front wheels – this saves additional maintenance costs.

Owing to the innovative measurement technology of the Visualiner PRISM the steering routine is quickly accomplished.

Pods, wheel clamps and targets are easy and simple to handle because they are made of magnesium. Should a pod have a defect, you simply return it and get a new one.



### *Easy to service*

No electronic components to be added to front wheels.

### *User-friendly*

The pods are particularly light.



## Flexible and easy to service



Bluetooth communication needs no cables, which reduces maintenance work considerably. Owing to the high reliability of data communication, measurement results are always accurate.

The Visualiner PRISM is especially flexible as it can be used in different wheel alignment bays – no additional space is needed for this wheel aligner.

The special measurement technology allows alignment of vehicles having a long wheelbase – so one single aligner is sufficient for alignment of vehicles ranging from the Smart car to vans.

Our modern lithium-ion batteries have an especially long life, providing 24 h service (3 days in case of 3-4 alignments per day) with one charge. The batteries are software-controlled, so need for recharging is signalled early enough to avoid interruption of alignment tasks. The remaining charge is indicated to enable the user to safely complete the alignment.

The self-explanatory menu avoids mistakes on user's end, guiding the user quickly and simply through all measurement sequences.

Vehicle specifications are sourced directly from the OEMs and are therefore complete, up to date and correct. Complete OEM data and information support alignment of less conventional vehicle types. On the whole the specifications of more than 25,000 models of the past 25 years are available.

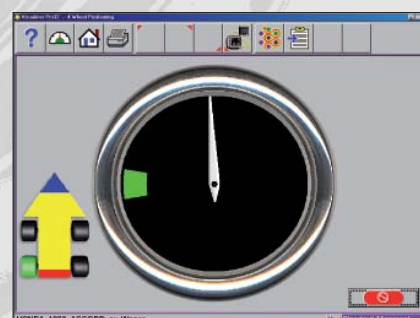


### *Light*

The wheel clamps made of magnesium are extremely light.

### *Clearly arranged*

User-friendly menu-guided on-line help for run-out compensation.





## Benefits of the Visualiner PRISM

		PRISM	CCD
	Weight: target + clamp + pod	Green	Red
	Block camera view	Green	Red
	Cost	Green	Red
	Space requirement	Yellow	Yellow
	Light sensitive	Green	Red
	Electronic onto the wheels	Green	Red
<b>Communication</b>	Wireless / Cordless	Green	Red
	Bluetooth	Green	not applicable
	Cordless reliability	Green	Red
	Battery life	Green	Red
<b>Service</b>	Service free – no parts replacement	Green	Red
	Serviceability	Green	Red
	Parts interchangeable	Red	Green
<b>Software features</b>	Field calibration	Green	Red
	Long wheel base capable	Green	Green
	No spoiler adaptors needed	Green	Red
	No electronic turntables	Green	Red
	Dimension screen	Yellow	Yellow
	Rolling runout	Yellow	Yellow
	Jacking runout	Green	Red
	Gravity gauge	Green	Red
	Brake system	Green	Red
	Rack dependant	Yellow	Yellow
	Wheel diameter	Yellow	Yellow
	Rollback	Yellow	Yellow
	OEM approved	Red	Green





## Features

### FEATURES

<b>General Features</b>
Windows XP Operating System
Vehicle Specifications – 25 + years
Custom Vehicle Specifications
Regional Specifications
Aligner System Diagnostics
Backup/Restore of Calibration & Setup Data
<b>Operator Efficiency</b>
Integrated Help system
3-D Animations
Tools, Parts & Adjustment Instructions
Advanced Customer Database
Customer Database Backup/Restore
Multiple Print Formats
Multiple Units of Measure
Equalize Toe Warning

<b>Measurements</b>
Caster & SAI on Turntables
SAI Elevated
Toe Out on Turns
Ride Height Modified Vehicle Specifications
FrameCheck™ Light Truck Frame Angle
<b>Adjustments</b>
Live Caster, Camber & Toe – Turntables
Live Caster, Camber & Toe – Elevated
Camber & Toe – Turntables (Frozen Caster)
Camber & Toe – Elevated (Frozen Caster)
A-Arm Adjust
Rear Shims



# Visualiner PRISM

## Specifications

### SPECIFICATIONS

#### Standard Accessories

Universal Wheel Clamp 11" – 22"

Steering wheel holder

Brake pedal depressor

#### Optional Accessories

+4" Universal Wheel Clamp Extension Kit – C30926

#### Equipment Specifications

Wheel size: 11" – 26"

Tyre diameter: up to 37"

Track width: 48" – 96"

Wheel base: 70" – 180"

#### Power Requirements

230V, 1Ph, 50/60 Hz, 6amp/3amp

## Snap-on® Equipment

#### France: Snap-on Equipment France

ZA du Vert Galant · 15, rue de la Guivernone BP7175 · 95310 Saint-Ouen-L'Aumône  
Phone: +33 (0) 134/48 58-78 · Fax: +33 (0) 134/48 58-70 · www.snapon-equipment.fr

#### Germany: Snap-on Equipment GmbH – Undercar · Werner-von-Siemens-Str. 2 · 64319 Pfungstadt

Phone: +49 (0) 6157/12-0 · Fax: +49 (0) 6157/12-286 · www.snapon-equipment.de

#### Italy: Snap-on Equipment s.r.l. · Via Prov. Carpi, 33 · 42015 Correggio (RE)

Phone: +39 0522/733-411 · Fax: +39 0522/733-410

#### United Kingdom: Snap-on Equipment Ltd. · 48 Sutton Park Avenue · Reading RG6 1AZ

Phone: +44 (0) 118/929-6811 · Fax: +44 (0) 118/966-4369 · www.johnbean.co.uk

#### EMEA-JA: Snap-on Equipment s.r.l. · Via Prov. Carpi, 33 · 42015 Correggio (RE)

Phone: +39 0522/733-483 · Fax: +39 0522/733-479 · www.jbeg.net